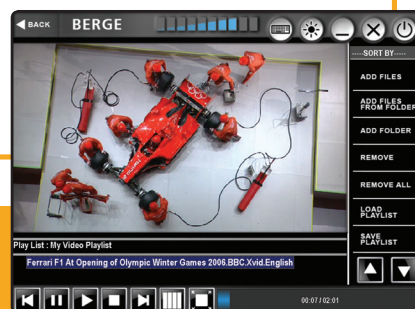
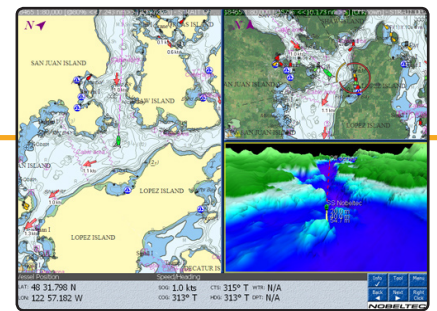
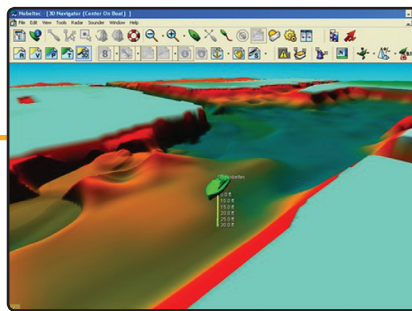
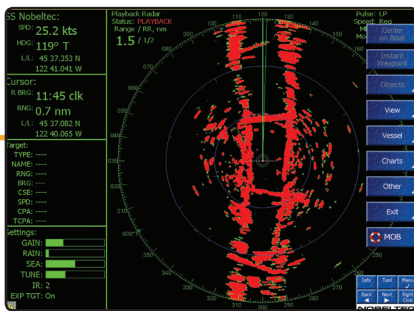


# BERGE

# OCEAN MASTER I

MARITIM COMPUTER  
FOR ET KREVENDE MILJØ



**BERGE Oceanmaster -Innovation Through Design-**

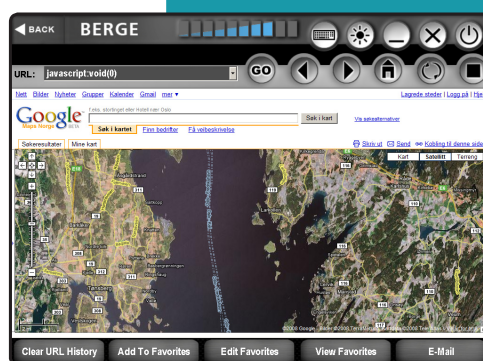
# BERGE OCEAN MASTER I

## VNS MAX PRO & BERGE DIGITAL DASH

BERGE Oceanmaster I er en kraftig og kompakt industriell computer med lavt energiforbruk.

Den er basert på Intels nye 1.6Ghz Atom prosessor. Dette gjør at maskinen bruker maksimalt 25W.

Maskinen tåler konstant vibrasjoner på 1G, og kan operere i temperaturer fra -20C til +85C.



## VNS MAX PRO

- Support for C-Map by Jeppesen MAX Pro™ Cartography
- Microsoft® Vista Ready
- 3D View with Shaded Relief
- Real-Time Tracking
- Autopilot Ready
- Multiple Routes, Waypoints, and Boundaries
- AIS Target Tracking
- Powerful Place and Name Search
- Seamless Chart quilting and Rotation Options
- Video Camera Support
- Tides and Currents Overlay
- GRIB Weather Support
- Single Radar Support

## BERGE DIGITAL DASH

- Underholdnings modul
- Internet
- Video
- Musikk
- Google Maps
- Posisjons Server
- Epost
- Telefoni
- Fotoalbum
- Kamera
- Office

## BERGE OCEANMASTER I SPESIFIKASJONER

### TEKNISKE SPESIFIKASJONER

Processor	: Integrated Intel Atom processor 1.66 HZ
Memory	: 2 GB, DDR, 667 MHz DIMM
Chipset	: Intel 945GC and ICH7
Video	: Intel Graphics Media Accelerator 950
I/O control	: SMSC* LPC47M997 based Legacy I/O controller for serial, parallel, and PS/2 ports
LAN support	: 10/100 Mbits/sec LAN subsystem using the Realtek* LAN adapter device
Rear Panel	: 4x USB 2.0 1x VGA, 1x Serial 1x Parallel 2x ps/s Mouse Keyboard 1x rj45 100 MB

### FYSISKE SPESIFIKASJONER

Høyde	: 19,5 cm
Bredde	: 26,7 cm
Dybde	: 5,7 cm
Vekt	: 2,2 Kg

### LAGRING

Harddisk	: Automotive 30GB
Maksimum G	: 200
Kontinuerlig G	: 10
MTBF	: 1.000,000

### MILJØ

Min temperatur	: -20C
Maks temperatur	: 85C
Min spenning	: 6V
Maks spenning	: 30V
Maks Strømforbruk	: 25W